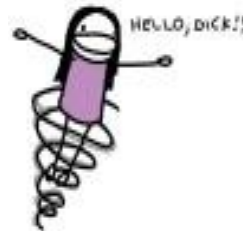


## Corporate Philosophy

**Create**



**Execute**



**Serve**



**Live**



**Enjoy**



**Profession**



# Outline

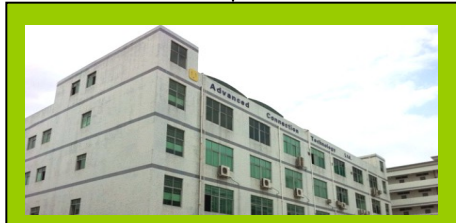
- **About ACTT**
- **Products**
- **Partners**
- **Future Plan**
- **Competitive Advantage**

# History



# Factory

Advanced Connection Technology Inc.



CNACT



LFACT

Professional OEM/ODM

Localization Service



VOACT



VACT



# Products

## Connector



## Module

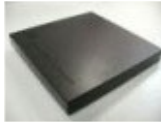


## Cable Assembly



# ANTENNA

## RFID Reader Antennas



200 x 200 mm<sup>2</sup>



95 x 95 mm<sup>2</sup>



60 x 60 mm<sup>2</sup>



210 x 297 mm<sup>2</sup>



50 x 50 mm<sup>2</sup>

Reference specifications for RFID antennas

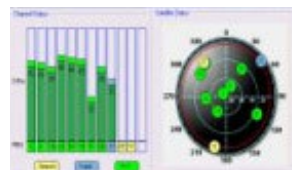
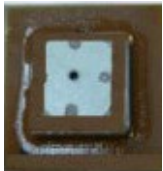
SPEC	Circular polarization UHF antenna			RF antenna @ 13.56 MHz	
	200*200 mm <sup>2</sup>	95*95 mm <sup>2</sup>	60*60 mm <sup>2</sup>	210*297 mm <sup>2</sup>	50*50 mm <sup>2</sup>
Size	200*200 mm <sup>2</sup>	95*95 mm <sup>2</sup>	60*60 mm <sup>2</sup>	210*297 mm <sup>2</sup>	50*50 mm <sup>2</sup>
BW (MHz)	800-1050	762-1175	910-960	2	2
Gain	6.2 dBi	-2 dBi	2 dBi	---	---
Range	5-10 m @ 1W	2-3 m @ 1W	2-3 m @ 1W	> 20 cm	> 2 cm
Weight	390 g	85 g	5g		

## Wireless Charging



## GPS Antennas Solutions

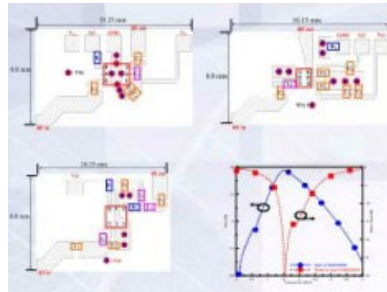
CP SMD antennas



GPS Printed antennas

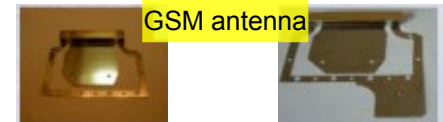


Multi-choice of LNA for active antenna upon request

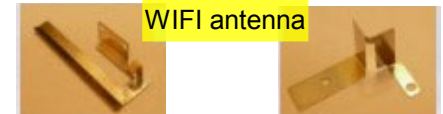


Central Frequency	1.575 GHz
Bandwidth@10 dB	10 MHz (typical)
Gain	1 dBi Max
Polarization	RHCP
Axis Ratio	3dB
Impedance	50Ω
Operating Temperature	-25~+85 °C

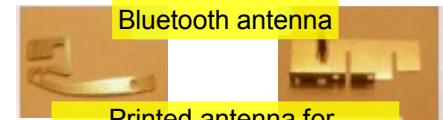
## Ready-for-use in ACT



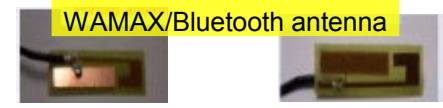
GSM antenna



WIFI antenna



Bluetooth antenna



Printed antenna for WAMAX/Bluetooth antenna

# Medical



# Medical Solution



# Partners

ASUS



PEGATRON

PEGATRON™

COMPAL



QUANTA



PANASONIC

**Panasonic**

Intel



DELL



JABIL

**JABIL**

GARMIN

**GARMIN™**

HARMAN

**HARMAN**

Hua-chuang  
Automobile





CHRYSLER



BMW



MASERATI



ALFA ROMEO



GEELY



FIAT



LUXGEN



CMC



中華汽車

GM



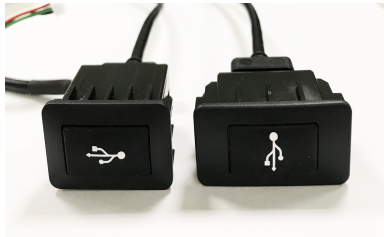
GAC GROUP



GAC MOTOR

# Future Plans

## Products



## Market

**Communication**

**Automotive**

**Medical**

**Aerospace**

**Railway**

**Ships**

## Future Plans

1、 Approach markets to satisfy customers' demand.

2、 Continue to expand markets and operational scales.

3、 Reinforce vertical integration of resources and establish information collection.

4、 Operate plural quality systems and control product quality.

5、 Grasp critical techniques and design future products.

# ACTT Core Competence

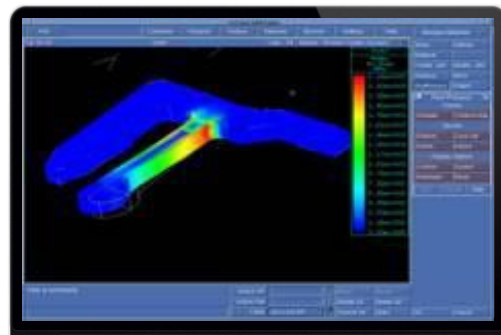
Professional Research & Development capability

Professional R&D software : AutoCad 、 Solidworks 、 Pro-E

Advanced simulation software: Moldflow 、 MSC. AFEA 、 ANSYS



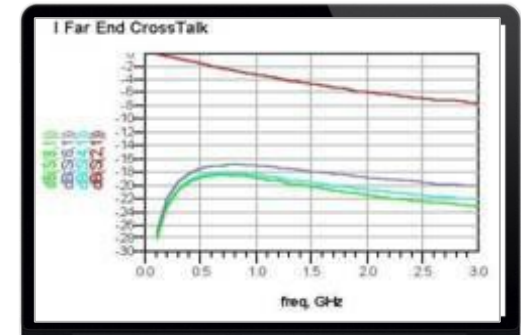
Professional Mold/Product Design  
and Manufacturing capability



Capability of Customization

Automation design

Professional manufacturing

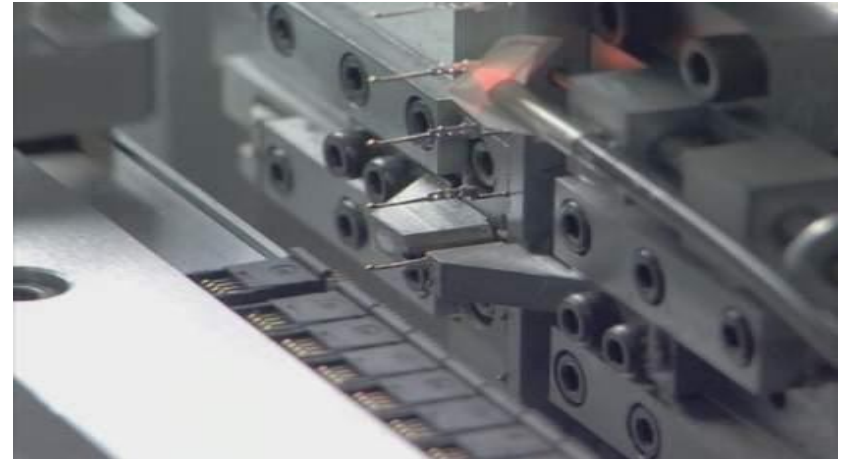


High-precision  
Production Equipments

High-flexibility Production  
arrangement

# Professional Manufacturing

- High Precision Process Machines.
- Long term investment commitments On RD, Packaging Technology & Capacity Scale.
- In-Line Production Capability Monitor & Quality Control.
- Implement 6 Sigma For Continuous Improvement.
- Automation Assembly & Automatic Testing.
- Cost Leadership On Material, Process, & Quality.





# ACTT Quality Assurance



ISO9001  
2015



IATF16949  
2016



ISO14001  
2015



ISO13485  
2016



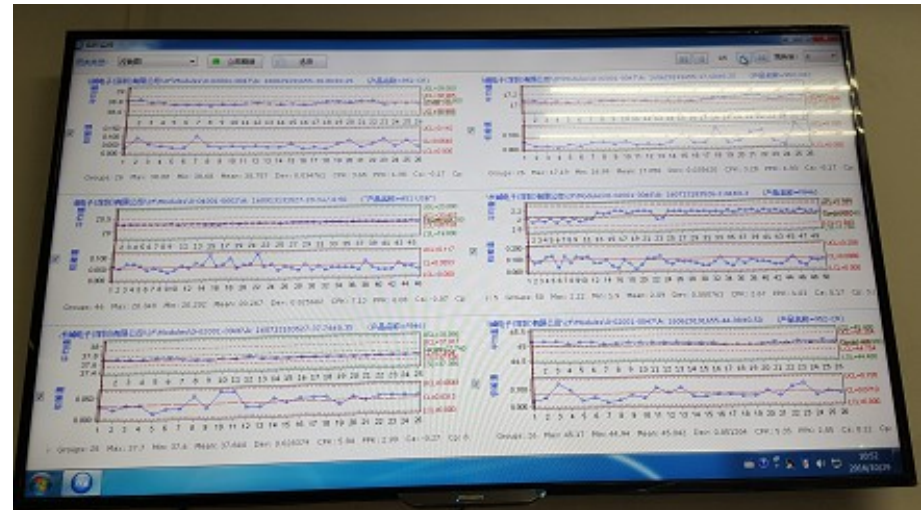
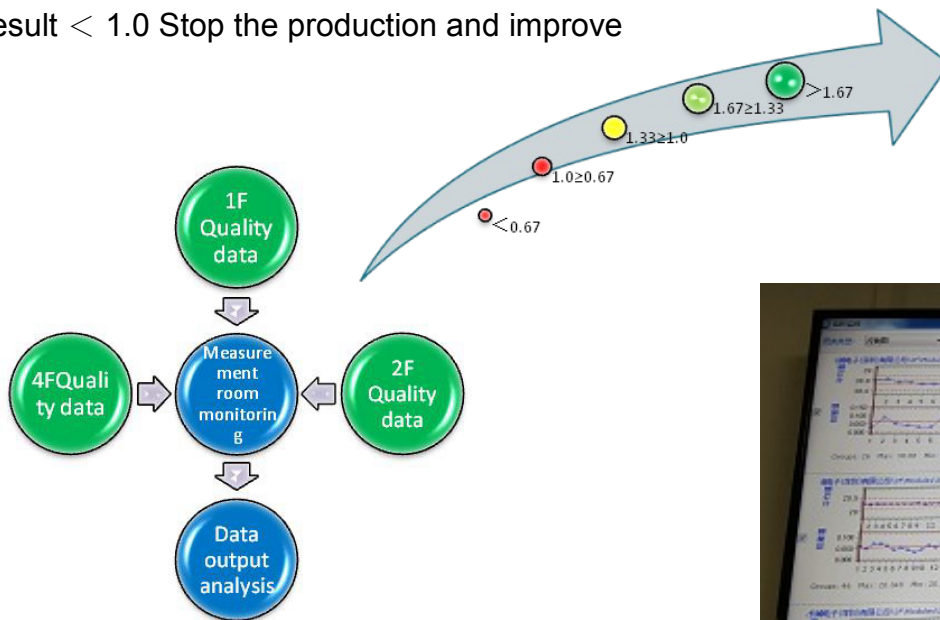
AS9100D  
2016

# Quality System - SPC System

Collect the real-time data of each stage for SPC analysis, to find and prevent any issues in the early stage and implement continuous improvement.

## Capability Index of CPK

- Result  $\geq 1.33$  PASS
- Result  $< 1.33$  Early warning and continuous attention
- Result  $< 1.0$  Stop the production and improve



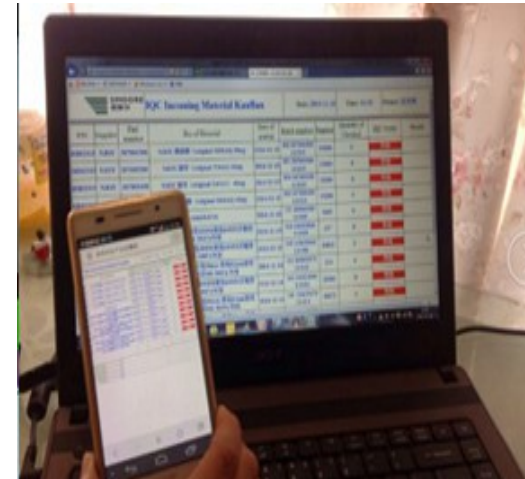
# Quality Systems - MES System

To assure products' quality, MES system collect and monitor all the data of whole production flow from orders, production, testing to packaging.

## Establish production order

生產報號	PH20151203001	生產線	L004	班組	A	狀態	ZS02	<input type="checkbox"/> 完成	
計劃日期	2015-10-27 00:00:00.0	投產數	600.00	完成數	0.00	不良數	0.00	損耗數	0.00
開始日期	2015-12-01 14:45:00.0	指令單號	idsf333	客戶編號		客戶名稱			
完成日期	2015-12-01 14:45:00.0	客戶PO		拉長	klk				
成品編號	0-00001-0010	名稱	USCAR Mini USB 5Pin SMT A Type		<input checked="" type="checkbox"/> 是否在用				

## Tracking material, operator & equipment



## Tracking finished products

序號	成品名稱	成...	成...	成品序列號	原料批號	原料編號	原料名稱	原...	原...	原料序列號	工序名稱	生產線	員工	機
1	CAR Mi...	PC	X0	8887701	201410140...	25-11451-...	for 301-04...	PC	AA		排針	L004	7y543	hjhy7
2	CAR Mi...	PC	X0	8887701	201410140...	301-04111...	180度18.5...	PC	AB		焊接	L004	7y543	hjhy7
3	CAR Mi...	PC	X0	8887701	201412170...	301-04021...	BLACK P...	PC	AB	8887701	焊接	L004	7y543	hjhy7
4	CAR Mi...	PC	X0	8887711	201410140...	25-11451-...	for 301-04...	PC	AA		排針	L004	7y543	hjhy7
5	CAR Mi...	PC	X0	8887711	201410140...	301-04111...	180度18.5...	PC	AB		焊接	L004	7y543	hjhy7
6	CAR Mi...	PC	X0	8887711	201412170...	301-04021...	BLACK P...	PC	AB	8887711	焊接	L004	7y543	hjhy7

## paperless office



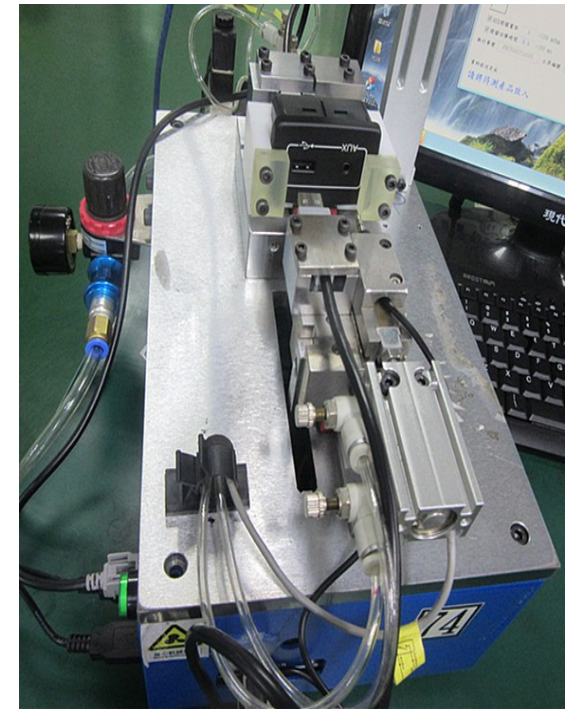
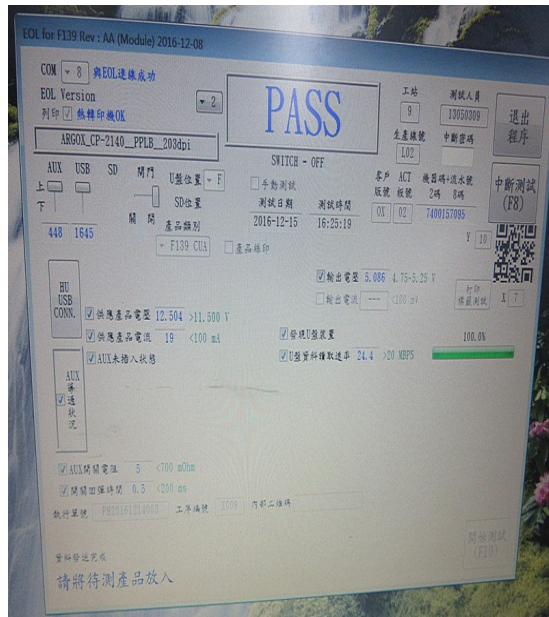
## Production Board





# EOL Functional Test for Finished Products

To check products' function after all manufacturing process, stimulating the comprehensive performance of production as customers use at the last station of production. To find out potential quality and function problem timely before the customers use.



# Lab Equipment

Temperature Environmental Test



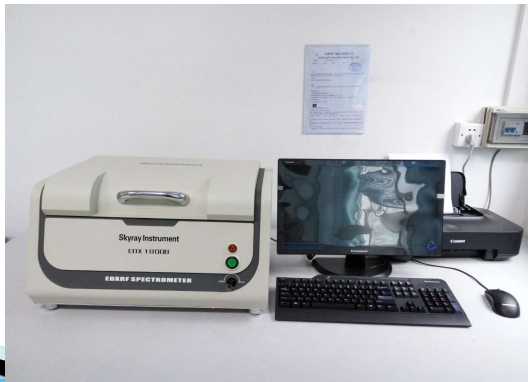
Thermal Cycling Testing



Salt Spray Test



XRF



Network Analyzer



# Mold Processing Equipment



wire-electrode cutting



EDM



grinding machine



Laser Carving



Milling Machine

**High-End Molding Machine**



# Production Line

We advocate the concept of "zero defect" and "doing things right", production in accordance with ISO/TS16949 quality control standard.



# Workshop





# Workshop



# Warehouse Management System





# Clean Room

**(class 6 according ISO 14644-1)**



**Thanks for Your Attention**

