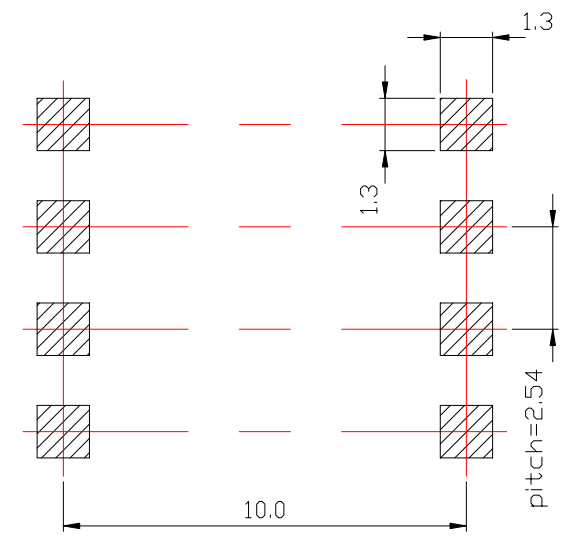
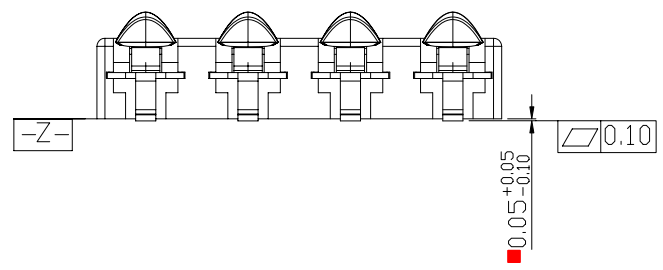
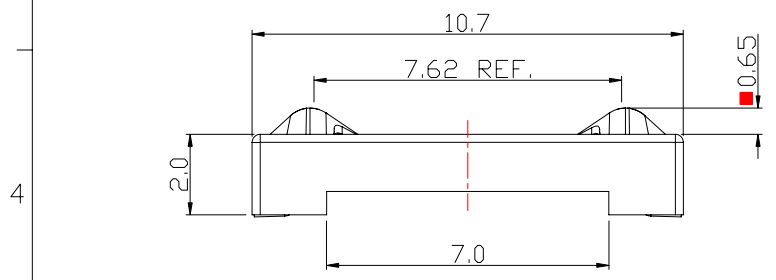
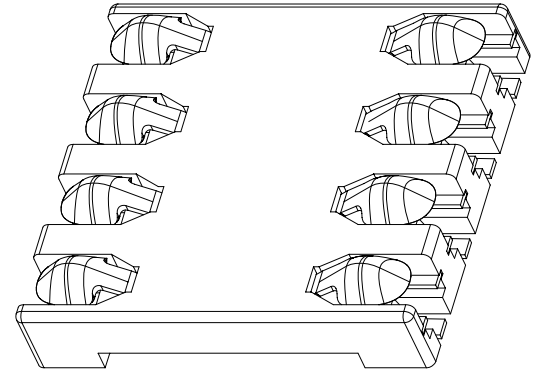
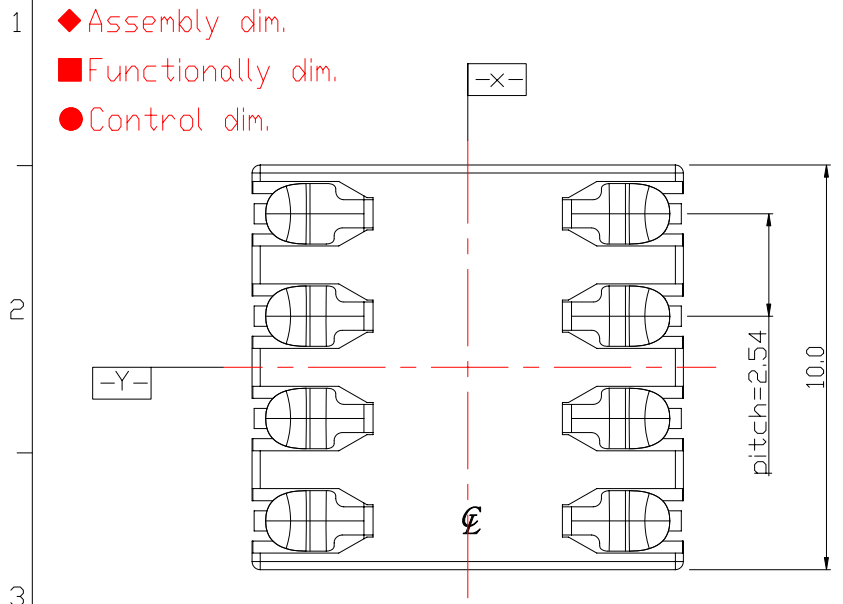


THESE DRAWINGS AND SPECIFICATIONS ARE THE SOLE PROPERTY OF ADVANCED CONNECTION TECHNOLOGY INC. AND SHALL NOT BE REPRODUCED, COPIED, OR USED IN ANY MANNER WITHOUT THE PRIOR WRITTEN CONSENT OF ADVANCED CONNECTION TECHNOLOGY INC. OR ITS AFFILIATED SUBSIDIARIES.

CAD FILE: S0000106A

REV.	DESCRIPTION	DWG		APPROVED	
		NAME	DATE	NAME	DATE
AA	RELEASED	Coco	2007/01/23	Hunter	2007/01/23

- △△△
- ◆ Assembly dim.
 - Functionally dim.
 - Control dim.



P.C. BOARD LAYOUT
Tolerance ±0.05

NOTE:
1.Material :
 1-1.Housing: High Temperature Thermoplastic, UL94V-0, BLACK.
 1-2.Contact: COPPER ALLOY.
2.FINISH:
 2-1.CONTACT AREA: GOLD OVER NICKEL.
 2-2.SOLDERING AREA:GOLD OVER NICKEL.

Approval Signature

INTENDED USE: ACT		ACT Advanced Connection Technology Inc. TAIWAN, R.O.C. TEL: 886-2-88091060			
GENERAL DIMENSION		TITLE: Sim Card conn.8pin Pitch 2.54*H 2.00mm.		DRAWN: Coco 2007/01/23	
XX±0.30	X.X±0.15	DWG NO: 217-00001-06		CHECKED: Knight 2007/01/23	
X±0.20	X.XX±0.10			APPROVED: Hunter 2007/01/23	
		UNIT: mm	SCALE: 1:1	SHEET 1 OF 2	NAME DATE
		REV. AA			

THESE DRAWINGS AND SPECIFICATIONS ARE THE SOLE PROPERTY OF ADVANCED CONNECTION TECHNOLOGY INC. AND SHALL NOT BE REPRODUCED, COPIED, OR USED IN ANY MANNER WITHOUT THE PRIOR WRITTEN CONSENT OF ADVANCED CONNECTION TECHNOLOGY INC. OR ITS AFFILIATED SUBSIDIARIES.

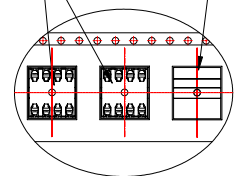
CAD FILE:S0000106b

REV.	DESCRIPTION	DWG		APPROVED	
		NAME	DATE	NAME	DATE
AA	RELEASED	Coco	2007/01/23	Hunter	2007/01/23

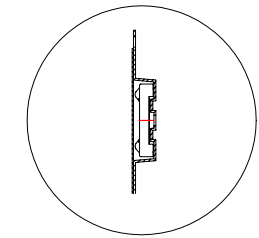


- ◆ Assembly dim.
- Functionally dim.
- Control dim.

Sim Card EMPTY

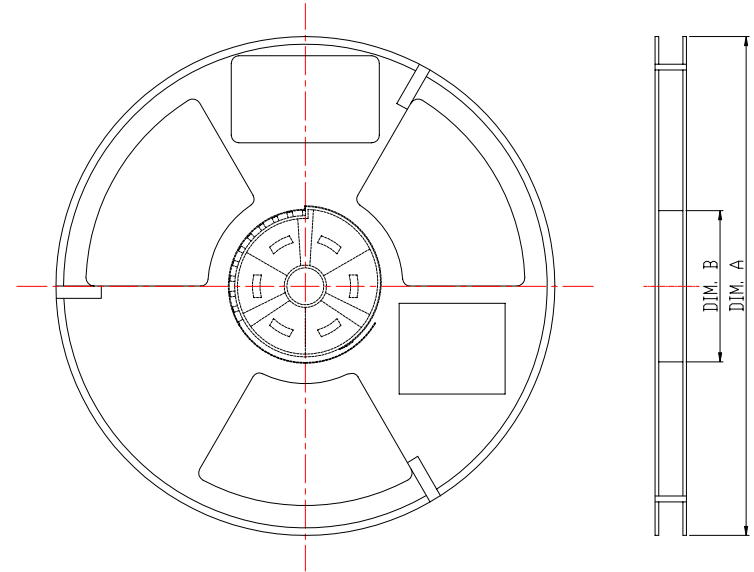
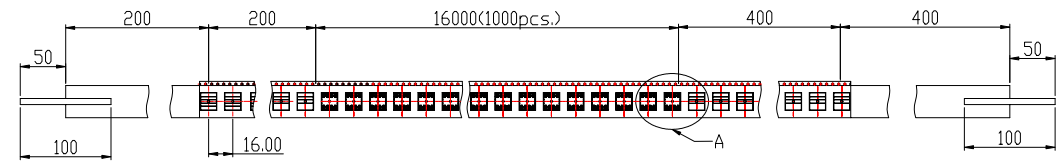


DETAIL A



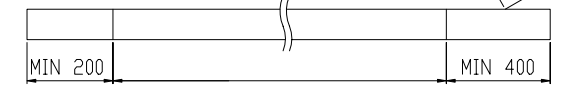
DETAIL B

Pull out in this direction



NOTE:

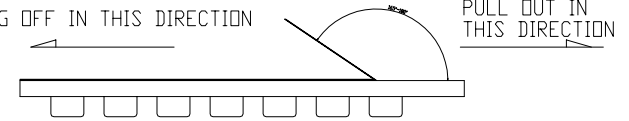
1. PACKING PREPARE LEADER AND EMPTY. DETAIL AS BELOW (UNIT:mm)



TAIL(EMPTY) WITH CONNECTOR LEADER(EMPTY)

2. FORCE OF TEARING OFF TOP TAPE 15~80 gf.

TEARING OFF IN THIS DIRECTION



3. EDGE OF ROLLING UP SHOULD BE ADHERED. THE TOP COVER TAPE TO THE SIDE OF RELL AN ADHENSIVE TAPE.
4. TOP COVER TAPE SHOULD BE LIMITED IN AREA OF PLASTIC TAPE.
5. PLASTIC REEL ---DIM A ϕ 330.2*DIM B ϕ 100.
6. QUANTITY---PLASTIC REEL ABOUT 1000 PCS.

INTENDED USE: ACT		ACT Advanced Connection Technology Inc. TAIWAN, R.O.C. TEL: 886-2-88091060			
GENERAL DIMENSION		TITLE: PACKING SPEC. FOR 217-00001-06		DRAWN: Coco 2007/01/23	
XX±0.20	.x±0.10	DWG NO: 217-00001-06		CHECKED: Knight 2007/01/23	
X±0.15	.xx±0.05	REV: AA		APPROVED: Hunter 2007/01/23	
UNIT: mm		SCALE: NONE		SHEET 2 OF 2	
		NAME		DATE	