

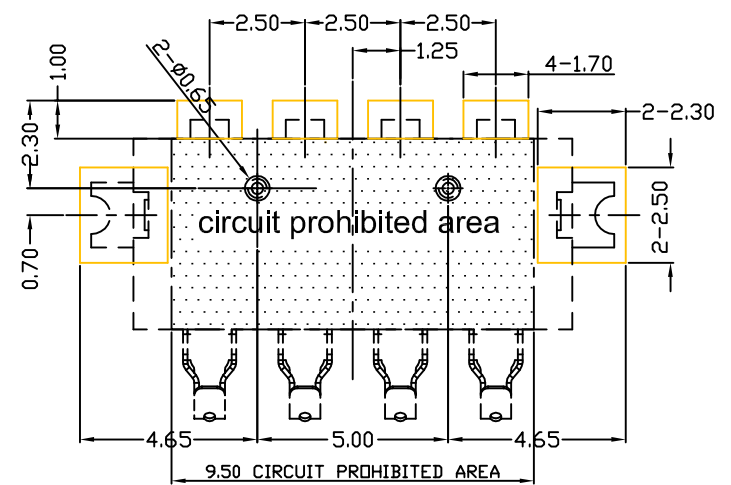
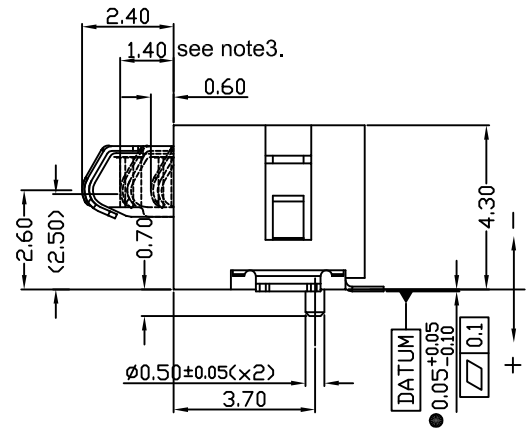
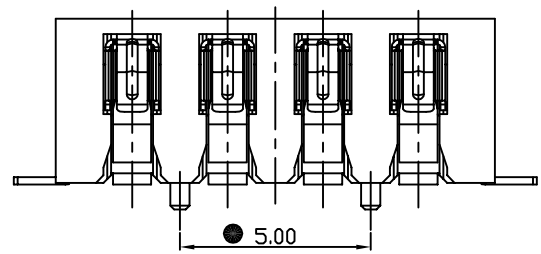
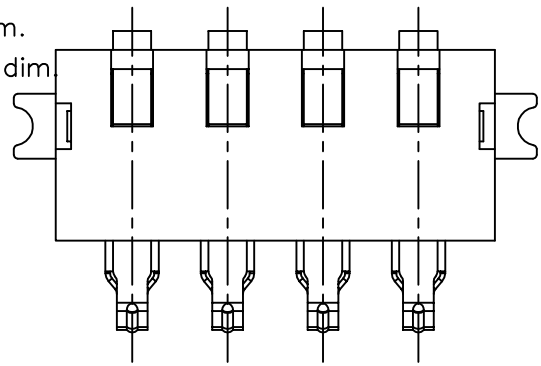
THESE DRAWINGS AND SPECIFICATIONS ARE THE SOLE PROPERTY OF ADVANCED CONNECTION TECHNOLOGY INC. AND SHALL NOT BE REPRODUCED, COPIED, OR USED IN ANY MANNER WITHOUT THE PRIOR WRITTEN CONSENT OF ADVANCED CONNECTION TECHNOLOGY INC. OR ITS AFFILIATED SUBSIDIARIES.

CAD FILE:S04000-12a

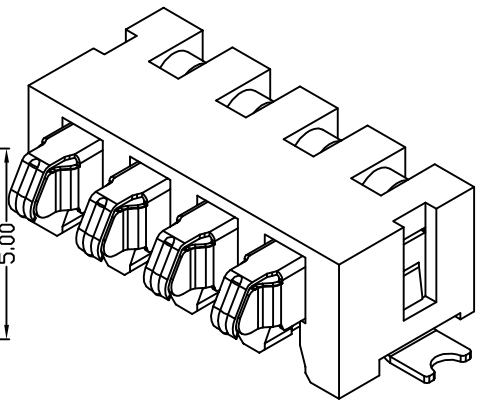
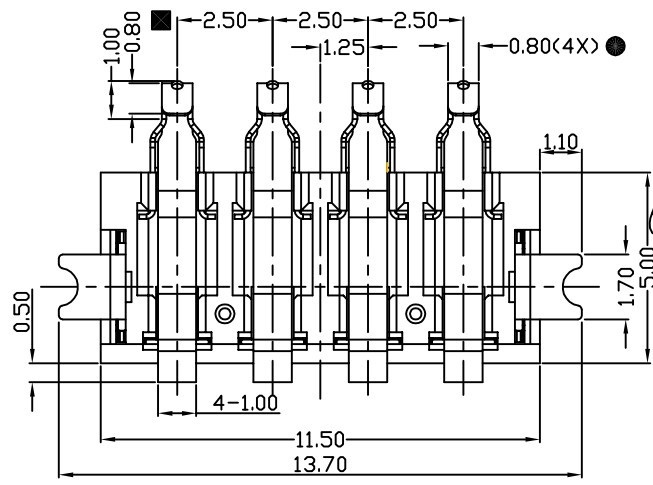
REV.	DESCRIPTION	DWG		APPROVED	
		NAME	DATE	NAME	DATE
AA	Released	Erin	08/22/2007	Verky	08/22/2007
AB	ECN:DC0903018	Erin	03/20/2009	Bill	03/20/2009

△△

- ◆ Assembly dim.
- Functionally dim.
- Control dim.



RECOMMENDED PCB LAYOUT TOLERANCE ±0.05mm



NOTE:

1. Material:
 - Housing: High-Temperature Nylon, UL94V-0, BLACK.
 - Contact: Copper alloy.
 - Plating: Ni Over all, Au (Contact area), Au (Soldering area).
 - Soldering Pin: Copper alloy.
 - Plating: Ni, Sn Over all.

2. COPLANARITY SHOULD BE WITHIN 0.1mm.
3. CONTACT FORCE: stroke 1.0mm -100g +/-15g ; stroke 1.2mm --100g min.

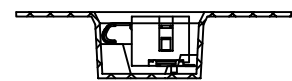
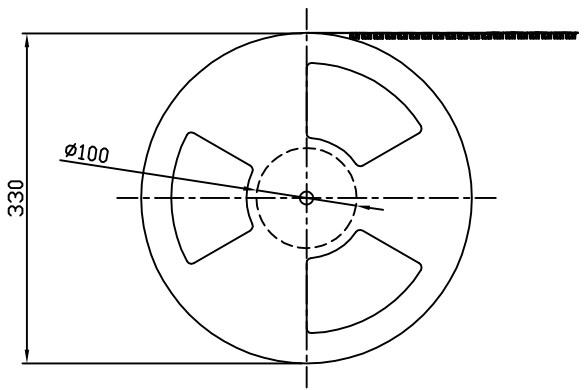
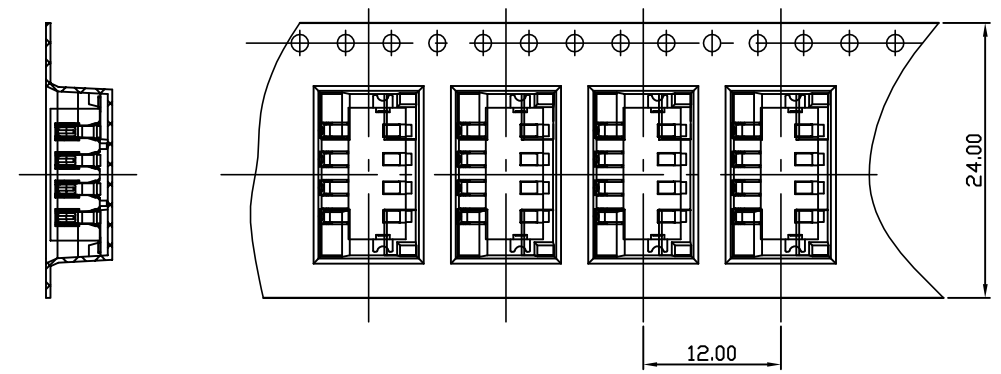
INTENDED USE: THTC		ACT Advanced Connection Technology Inc. TAIWAN, R.O.C. TEL: 886-2-88091080			
GENERAL DIMENSION		TITLE: 4pin Battery Conn. Pitch=2.5mm		DRAWN: Erin	03/20/2009
XX±0.25	.X±0.15	DWG NO: 800-04000-12 AB		CHECKED: Ray	03/20/2009
X±0.20	.XX±0.1			APPROVED: Bill	03/20/2009
UNIT: mm		SCALE: NONE	SHEET 1 OF 2	NAME	DATE

THESE DRAWINGS AND SPECIFICATIONS ARE THE SOLE PROPERTY OF ADVANCED CONNECTION TECHNOLOGY INC. AND SHALL NOT BE REPRODUCED, COPIED, OR USED IN ANY MANNER WITHOUT THE PRIOR WRITTEN CONSENT OF ADVANCED CONNECTION TECHNOLOGY INC. OR ITS AFFILIATED SUBSIDIARIES.

CAD FILE: S04000-12b

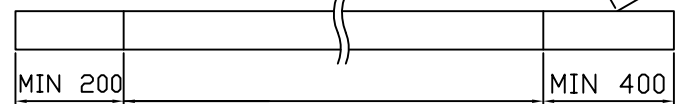
REV.	DESCRIPTION	DWG		APPROVED	
		NAME	DATE	NAME	DATE
AA	Released	ErIn	08/22/2007	Venky	08/22/2007
AB	ECN:DC0903018	ErIn	03/20/2009	Bill	03/20/2009

- 1 ◆ Assembly dim.
 2 ■ Functionally dim.
 3 ● Control dim.



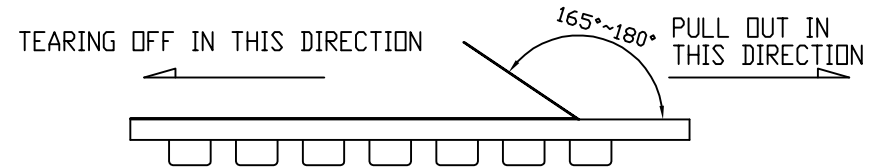
NOTES:

● 1. PACKING PREPARE LEADER AND EMPTY. DETAIL AS BELOW



TAIL<EMPTY> WITH CONNECTOR LEADER<EMPTY>

● 2. FORCE OF TEARING OFF TOP TAPE 15~80 gf



3. EDGE OF ROLLING UP SHOULD BE ADHERED THE TOP COVER TAPE TO THE SIDE OF REEL AN ADHENSIVE TAPE
 4. TOP COVER TAPE SHOULD BE LIMITED IN AREA OF PLASTIC TAPE
 5. PLASTIC REEL ---DIM A Ø330 DIM B Ø100
 6. QUANTITY----PLASTIC REEL ABOUT 800 PCS
 7. CARRIER TAPE COLOR : TRANSPARENT.

INTENDED USE: THTC		ACT Advanced Connection Technology Inc. TAIWAN, R.O.C. TEL: 886-2-88091060			
GENERAL DIMENSION		TITLE: 4pin Battery Conn. Pitch=2.5mm		DRAWN: ErIn 03/20/2009	
XX±0.15	.X±0.07	DWG NO: 800-04000-12		CHECKED: Ray 03/20/2009	
X±0.10	.XX±0.03	REV. AB		APPROVED: Bill 03/20/2009	
UNIT: mm		SCALE: NONE		SHEET 2 OF 2	
		NAME		DATE	

