

THESE DRAWINGS AND SPECIFICATIONS ARE THE SOLE PROPERTY OF ADVANCED CONNECTION TECHNOLOGY INC. AND SHALL NOT BE REPRODUCED, COPIED, OR USED IN ANY MANNER WITHOUT THE PRIOR WRITTEN CONSENT OF ADVANCED CONNECTION TECHNOLOGY INC. OR ITS AFFILIATED SUBSIDIARIES.

CAD FILE: S0200001a

REV.	DESCRIPTION	DWG		APPROVED	
		NAME	DATE	NAME	DATE
AA	released	tery	2007/07/31	Hunter	2007/07/31

AA

- ◆ Assembly dim.
- Functionally dim.
- Control dim.

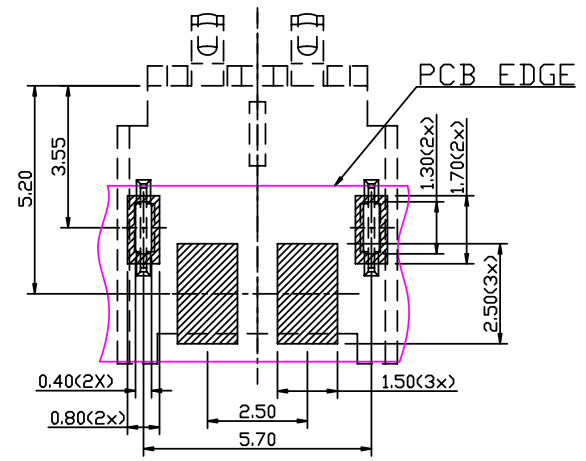
Soldering pin

Housing

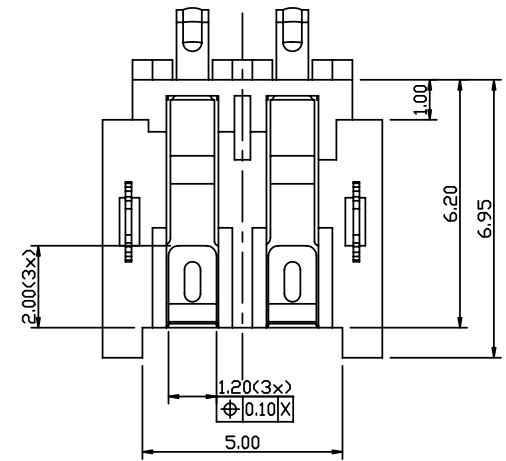
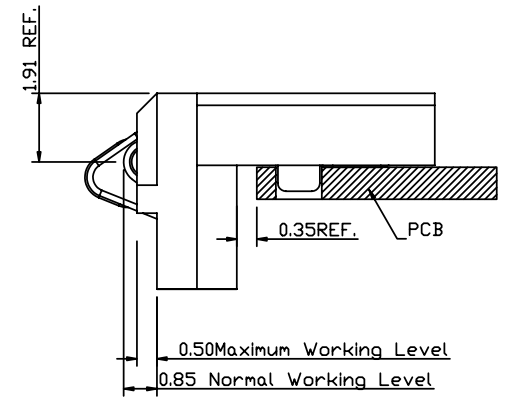
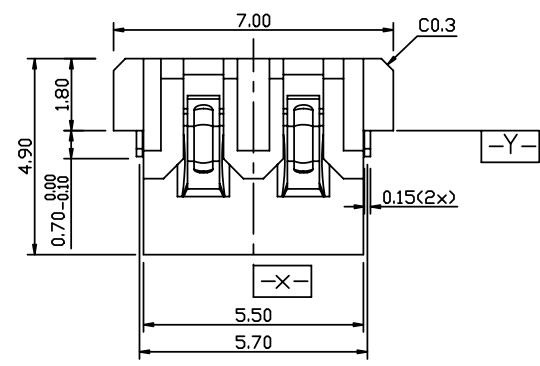
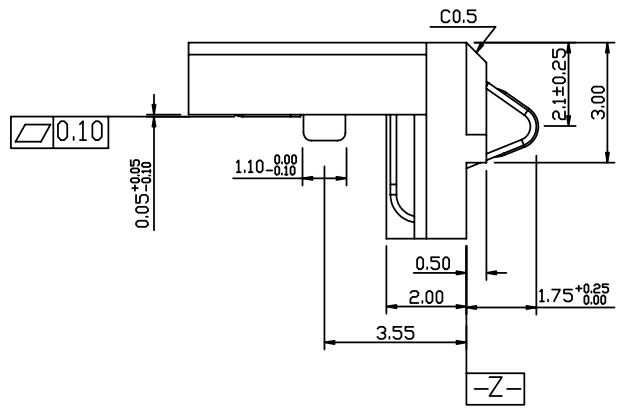
Contact

∅3.0(vacuum area)

PCB EDGE



PCB LAYOUT (Tolerance ±0.05)



NOTE:
 1. Material :
 1-1. Housing: High Temperature Thermoplastic, UL94V-0, BLACK.
 1-2. Contact: COPPER ALLOY.
 1-3. Soldering pin: COPPER ALLOY.
 2. FINISH:
 2-1. CONTACT : Ni Over all, Au 15u" on contact area
 2-2. SOLDERING AREA: Gold Flash OVER NICKEL.
 2-3. Soldering pin: Ni Over all, Sn 100u" on soldering area
 3. COPLANARITY SHOULD BE WITHIN 0.1mm.

INTENDED USE: +CNIAC		ACT Advanced Connection Technology Inc. TAIWAN, R.O.C. TEL: 886-2-88091060			
GENERAL DIMENSION		TITLE: Battery Conn. 2 Pins, Pitch =2.50mm	DRAWN: tery	2007/07/31	
XX±0.30	X.XX±0.15	CHECKED: knight	2007/07/31		
X±0.20	X.XX±0.10	DWG NO: 800-02000-01	REV. AA	APPROVED: Hunter	
UNIT: mm		SCALE: NONE	SHEET 1 OF 2	NAME	DATE

THESE DRAWINGS AND SPECIFICATIONS ARE THE SOLE PROPERTY OF ADVANCED CONNECTION TECHNOLOGY INC. AND SHALL NOT BE REPRODUCED, COPIED, OR USED IN ANY MANNER WITHOUT THE PRIOR WRITTEN CONSENT OF ADVANCED CONNECTION TECHNOLOGY INC. OR ITS AFFILIATED SUBSIDIARIES.

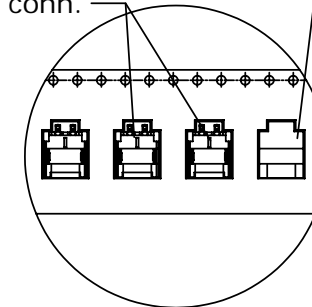
CAD FILE:S0200001b

REV.	DESCRIPTION	DWG		APPROVED	
		NAME	DATE	NAME	DATE
AA	released	tery	2007/07/31	Hunter	2007/07/31

AA

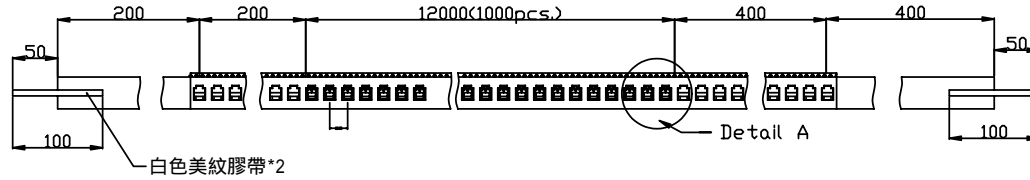
- ◆ Assembly dim.
- Functionally dim.
- Control dim.

battery conn. Empty



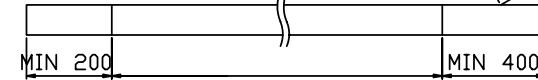
DETAIL A

Pull out in this direction



NOTE:

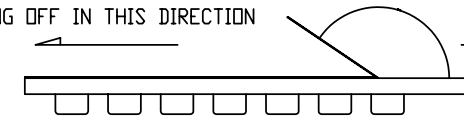
1. PACKING PREPARE LEADER AND EMPTY. DETAIL AS BELOW (UNIT:mm)



TAIL<EMPTY> WITH CONNECTOR LEADER<EMPTY>

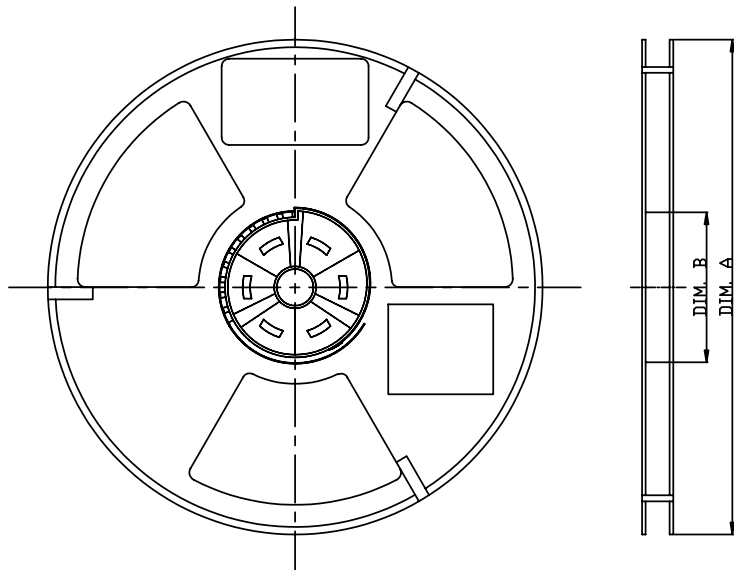
2. FORCE OF TEARING OFF TOP TAPE 15~80 gf.

TEARING OFF IN THIS DIRECTION



PULL OUT IN THIS DIRECTION

3. EDGE OF ROLLING UP SHOULD BE ADHERED. THE TOP COVER TAPE TO THE SIDE OF REEL AN ADHENSIVE TAPE.
4. TOP COVER TAPE SHOULD BE LIMITED IN AREA OF PLASTIC TAPE.
5. PLASTIC REEL ---DIM A ϕ 330.2*DIM B ϕ 100.
6. QUANTITY---PLASTIC REEL ABOUT 1000 PCS.



INTENDED USE: +CNIAC		ACT Advanced Connection Technology Inc. TAIWAN, R.O.C. TEL: 886-2-88091060			
GENERAL DIMENSION		TITLE: Battery Conn. 2 Pins, Pitch =2.50mm		DRAWN: tery	
XX \pm 0.30	.x \pm 0.15	DWG NO: 800-02000-01		CHECKED: Knight	
X \pm 0.20	.xx \pm 0.10	REV. AA		APPROVED: Hunter	
UNIT: mm		SCALE: NONE		SHEET 2 OF 2	
NAME		DATE			