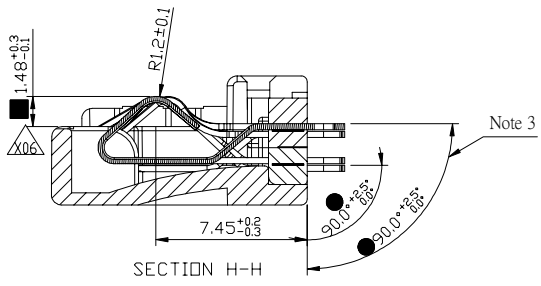
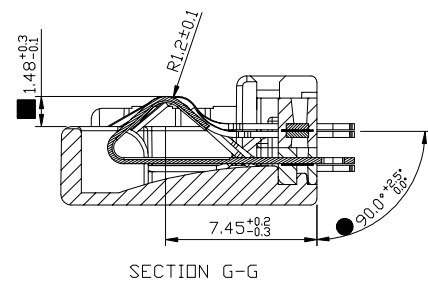
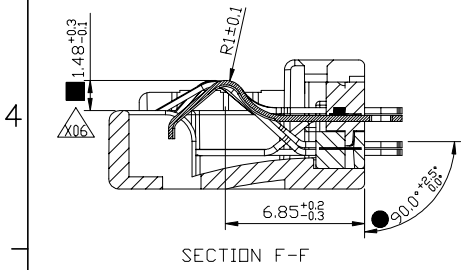
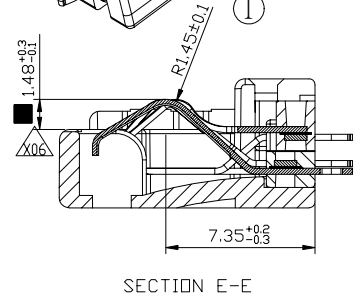
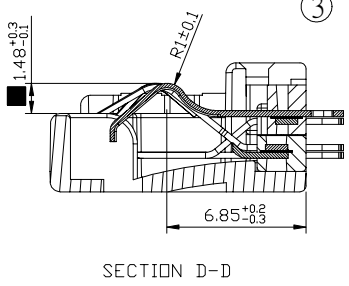
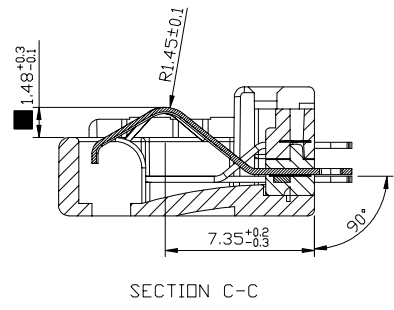
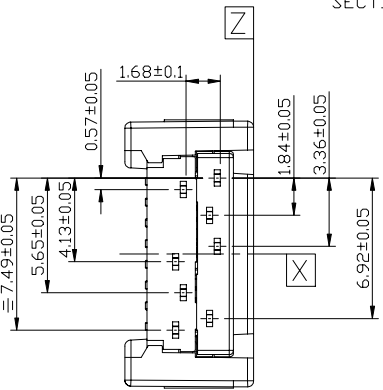
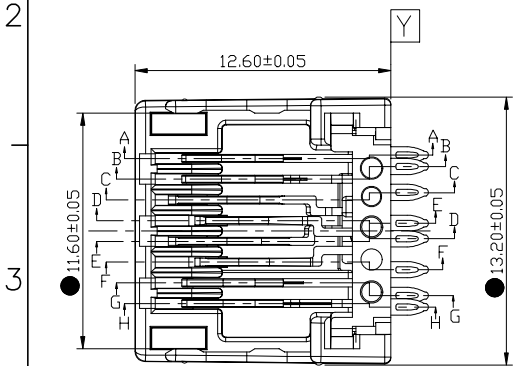
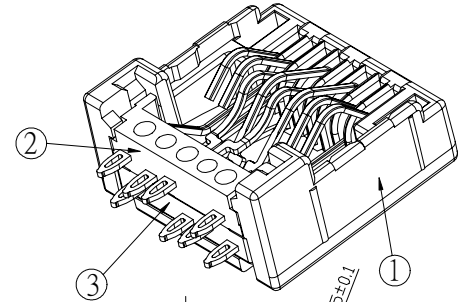
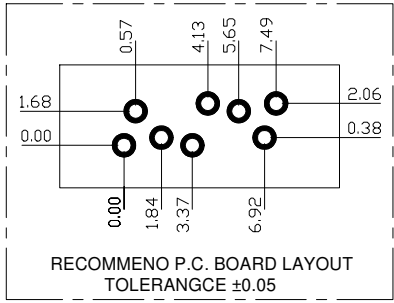
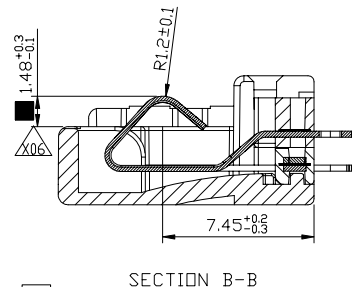
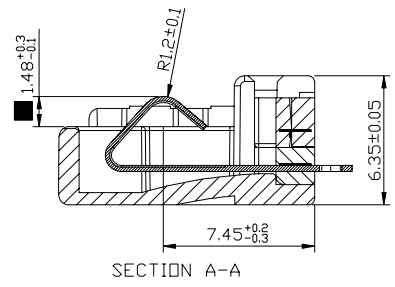


THESE DRAWINGS AND SPECIFICATIONS ARE THE SOLE PROPERTY OF ADVANCED CONNECTION TECHNOLOGY INC. AND SHALL NOT BE REPRODUCED, COPIED, OR USED IN ANY MANNER WITHOUT THE PRIOR WRITTEN CONSENT OF ADVANCED CONNECTION TECHNOLOGY INC. OR ITS AFFILIATED SUBSIDIARIES.

CAD FILE: XS0088007a

REV.	DESCRIPTION	DWG		APPROVED	
		NAME	DATE	NAME	DATE
X01	PROTOTYPE	Balon	2007/12/18	Hunter	2007/12/18
X02	CHANGE DESIGN	Balon	2008/05/14	Hunter	2008/05/14
X03	CHANGE DESIGN	Memory	2008/07/14	Hunter	2008/07/14
X04	CHANGE DESIGN	Memory	2008/07/16	Hunter	2008/07/16
X05	CHANGE DESIGN	Memory	2008/07/20	Hunter	2008/07/20
X06	CHANGE DESIGN	Memory	2008/07/25	Hunter	2008/07/25

- ◆ Assembly dim.
- Functionally dim.
- Control dim.



NOTE:
 1.MATERIAL
 1-1.SUPPORT D'INSERT: PA66,UL94V-0,black
 1-2.INSERT
 1-2-1HOUDING: PC,UL94V-0,gstay.
 1-2-2CONTACT: C70350 TM06 t=0.3mm
 2.PLATING
 COMPLETE NICKEL PLATING 1.26um MINI
 TINING PALTNG AREA(SELETIVE) : 0.5um MINI
 GOLD PLATING AREA(selective) : 0.8um MINI
 3.FOR THE ALL SOLDER OF CONTACT

③	2119-000-017	Part B	PC	1
②	2119-000-018	Part A	PC	1
①	2100-001-122	Support	PC	1
ITEM	P/N REQ'D	DESCRIPTION	UNIT	Q'TY

Approval Signature _____

— Cote symetrique tolerance 0.2
 — symetrical dimension tolerance 0.2

INTENDED USE: ACT	
GENERAL DIMENSION	
XX±1.0	X±0.5
X.X±0.3	.XX±0.10

		Advanced Connection Technology	
TITLE: 8P8C Plug (Insert V9)		DRAWN: Memory 2008/07/25	
DWG NO: 325-00880-07		CHECKED: Balon 2008/07/25	
REV: X06		APPROVED: Hunter 2008/07/25	
UNIT: mm	SCALE: NONE	SHEET 1 OF 1	NAME DATE

