



# **ADVANCED CONNECTION TECHNOLOGY**

**Vietnam Subsidiaries**

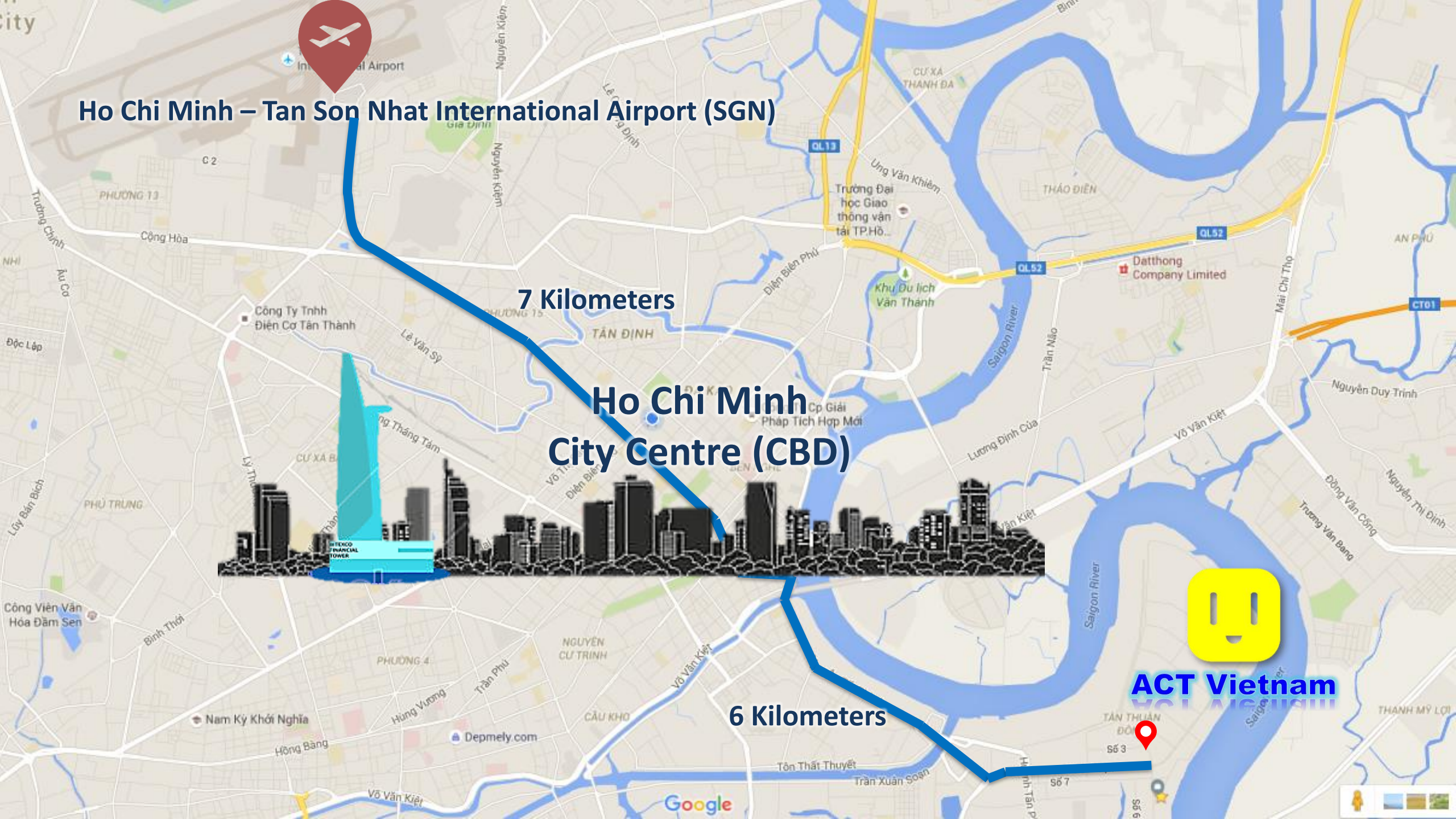


**Ho Chi Minh – Tan Son Nhat International Airport (SGN)**

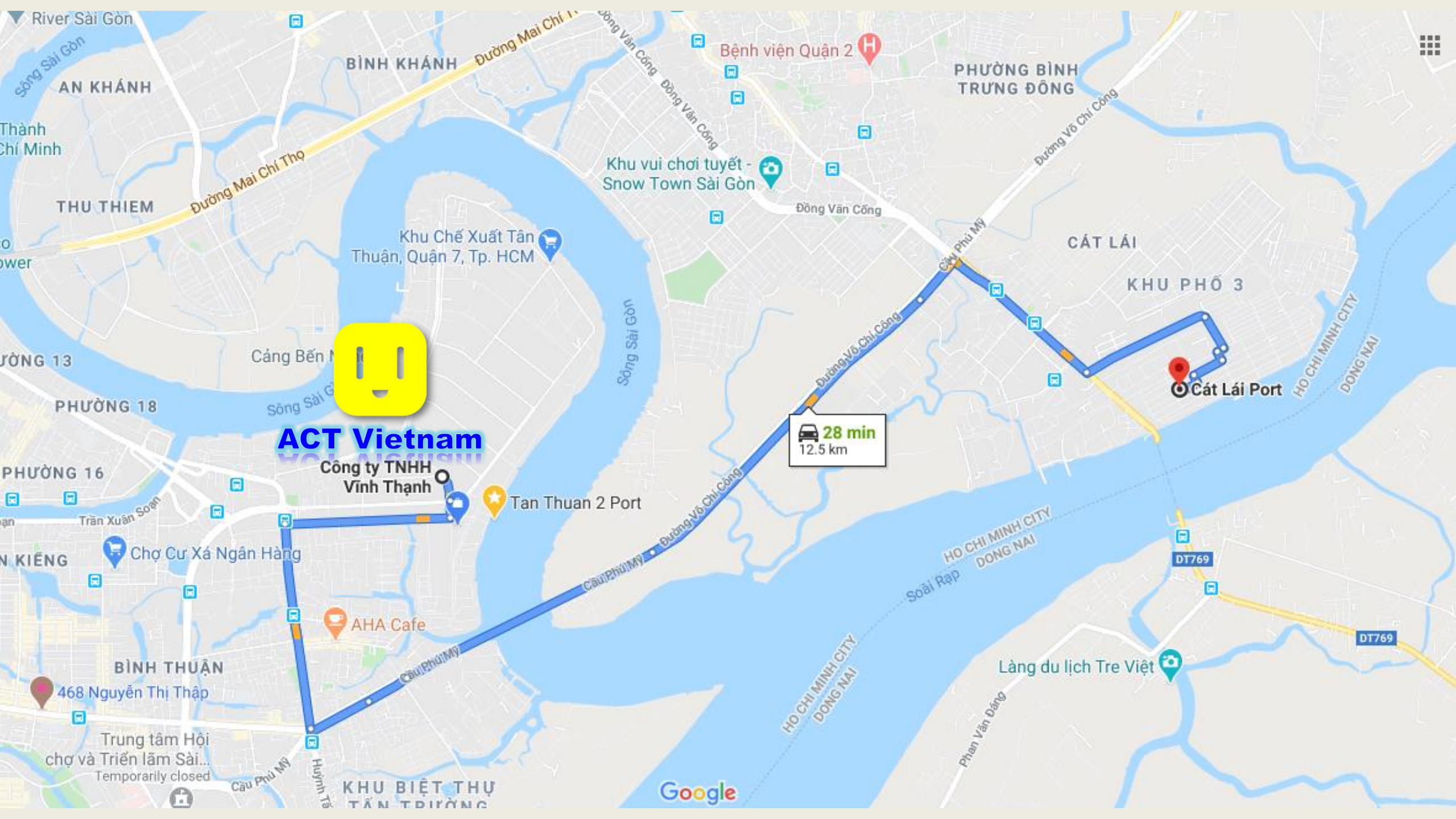
**7 Kilometers**

**Ho Chi Minh  
City Centre (CBD)**

**6 Kilometers**







**ACT Vietnam**

Công ty TNHH  
Vĩnh Thạnh

Tan Thuan 2 Port

AHA Cafe

 **28 min**  
12.5 km

Cát Lái Port

Google



## **Vinh Thanh Co.,Ltd.**

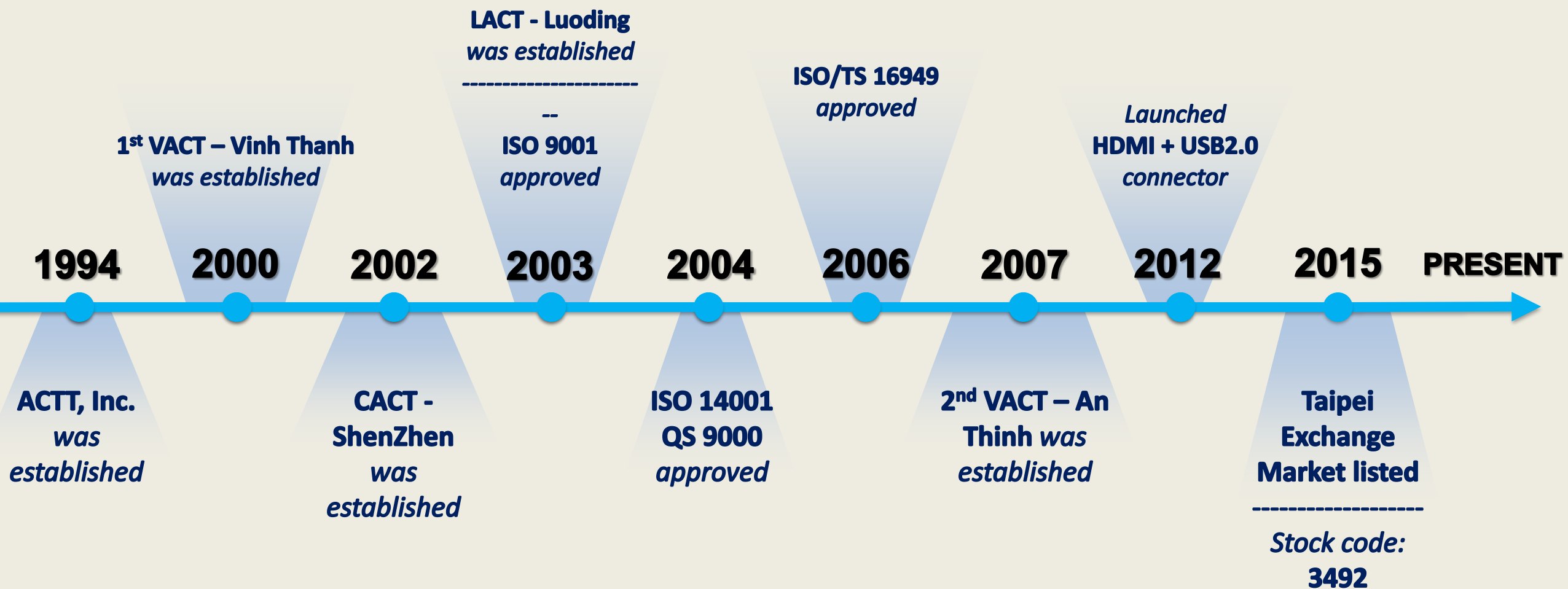
**No.8 street, Tan Thuan Export Processing Zone (EPZ),  
Tan Thuan Dong ward, District 7,  
Ho Chi Minh city, Vietnam.**



## **An Thinh Technology Co.,Ltd.**

**Lot Y, 2B-3A, Industrial area in Tan Thuan EPZ,  
Tan Thuan Dong ward, District 7,  
Ho Chi Minh city, Vietnam.**











AC-TECH

# AN THINH TECHNOLOGY CO.,LTD QUALITY CERTIFICATION

ISO 9001



萬泰認證

## CERTIFICATE OF REGISTRATION

This is to certify that the Management System  
established by

**AN THINH TECHNOLOGY CO.LTD**

Lot Y.02b-03a, Tan Thuan Industrial Park, District 7, Ho Chi Minh City, Vietnam

Has been assessed to comply with the requirements  
of the international standard

**GB/T 19001-2016idt ISO9001:2015**

Scope of certification

Design and Manufacturing of cable, wire and cable assemblies

NO: 15/20Q7126R21 DATE OF ISSUE: Sep, 18, 2020 VALID UNTIL: Jul, 19, 2023  
The Certificate Information Can be Obtained by Visiting <http://www.cnca.gov.cn>.



中国认可  
国际互认  
管理体系  
MANAGEMENT SYSTEM  
CNAS C015-M

First Surveillance	Second Surveillance	Third Surveillance
-----------------------	------------------------	-----------------------

*Wang Xiaodong*  
General Manager, WangXiaoDong

Hangzhou WIT Assessment Co., Ltd.  
13/14Floor, International Sunyard,  
No.1750 Jiangong Avenue, Binjiang  
District, Hangzhou • China

The surveillance audit shall be conducted at least once each year within the validity of registration certificate, and the interval between two surveillance audits shall not exceed 12 months.  
The certification organization must conduct surveillance audit regularly and the registration certificate continues effective after the eligible surveillance audit.  
The compliance label will be attached to this registration certificate after the eligible surveillance audit.  
Every certificate, which the certification scope within the required of administrative license or national mandatory certification requirements will become invalid when the license or mandatory certification lost effectiveness.

**ISO 9001:2015**

**CHAIRMAN**

```
graph TD; Chairman((CHAIRMAN)) --- GM(Vietnam Subsidiaries General Manager); GM --- MR(Manager Representative); GM --- Sales(SALES); GM --- Engineering(ENGINEERING); GM --- QA(QUALITY ASSURANCE); GM --- Tooling(TOOLING); GM --- Financial(FINANCIAL); GM --- Admin(ADMINISTRATION); GM --- Manufacturing(MANUFACTURING);
```

The diagram is an organizational chart. At the top is a dark blue circle containing the word 'CHAIRMAN' in white. A vertical line connects the circle to a blue rounded rectangle below it containing the text 'Vietnam Subsidiaries General Manager'. From the left side of this rectangle, a horizontal line connects to a green rounded rectangle containing the text 'Manager Representative'. From the bottom of the 'Vietnam Subsidiaries General Manager' rectangle, a vertical line extends down to a horizontal line. This horizontal line has seven vertical lines descending from it, each connecting to a blue rounded rectangle. These rectangles contain the following text from left to right: 'SALES', 'ENGINEERING', 'QUALITY ASSURANCE', 'TOOLING', 'FINANCIAL', 'ADMINISTRATION', and 'MANUFACTURING'.

**Vietnam Subsidiaries General Manager**

**Manager Representative**

**SALES**

**ENGINEERING**

**QUALITY  
ASSURANCE**

**TOOLING**

**FINANCIAL**

**ADMINISTRATION**

**MANUFACTURING**



# Major Customer



# FIELDS OF PRODUCTION

## Automobile & Vehicles



OBDII Cable



Entertainment



Communications



Telematics Modules



Automotive Assemblies



Automotive Assemblies



Multi Module



USCAR Connectors



HDMI-E  
Assemblies



Automotive Assemblies



Module with lock



HDMI-E Connector



HDMI-E assembly



USB+AUX assembly



USCAR connector





Cable Assemblies



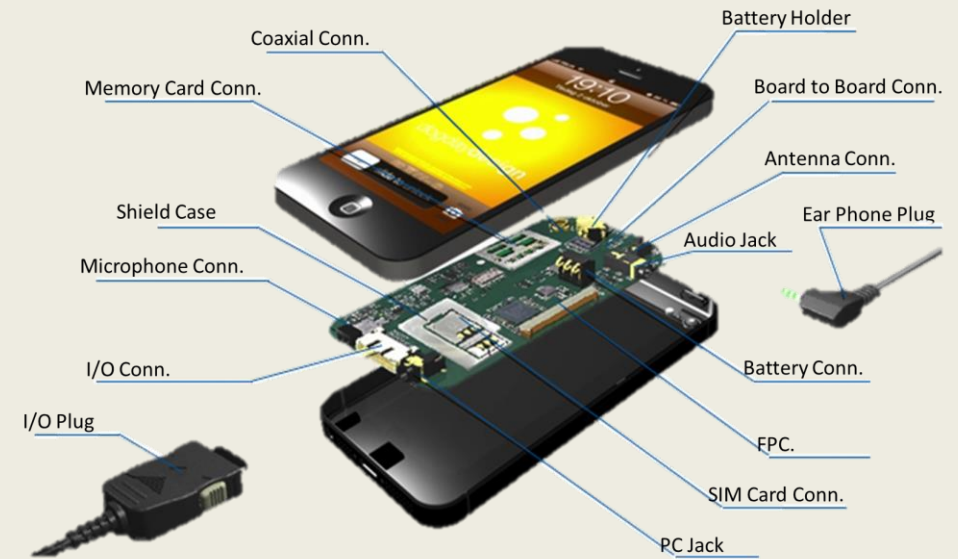
Connector Cable



Connector Cable



Cable Assemblies





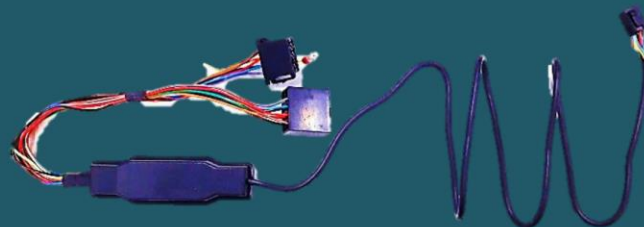


# VINH THANH CO.,LTD

- ❖ CABLE ASSEMBLIES
- ❖ MOLD & TOOLING
- ❖ PLASTIC PART INJECTION

**4,500 M<sup>2</sup> floor area**  
**500,000 – 1,000,000 PCS**  
of cable assembly per month

No.8 road, Tan Thuan EPZ, Tan Thuan Dong ward, District 7 , Ho Chi Minh city, Vietnam







OBDII Cable



Automotive Assemblies



Automotive Assemblies



Automotive Assemblies



Entertainment



Communications



Telematics Modules

# Cables Assemblies







# ASSEMBLY

VINH THANH CO.,LTD







# Horizontal Injection

50 tons

90 tons

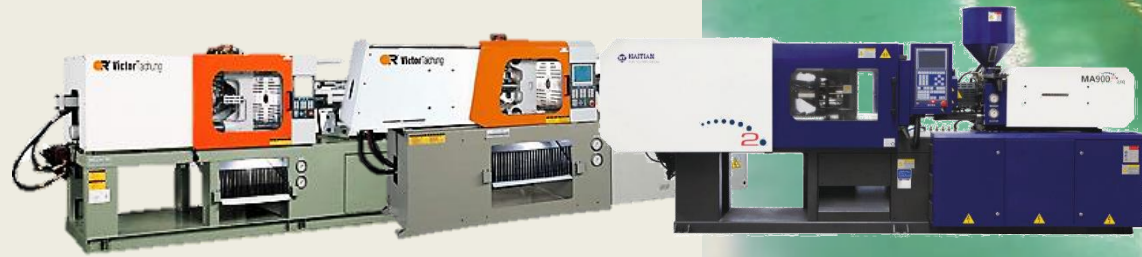
130 tons

138 tons

160 tons

168 tons

200 tons



# Vertical Injection

12.5 tons

20 tons

25 tons

40 tons



# INJECTION





# AN THINH TECHNOLOGY CO.,LTD

- ❖ CABLE ASSEMBLIES
- ❖ ELECTRIC WIRES
- ❖ CONSUMER ELECTRONICS EQUIPMENTS

Lot Y, 02b-03a, Tan Thuan IDZ, Tan Thuan Dong ward, District 7 , Ho Chi Minh city, Vietnam







# facilities & capacity

500,000 pcs  
of Cable Assembly  
per month



ELECTRIC WIRING EXTRUSION







# Cable production





# Injection



# CORE COMPETITIVENESS

Senior professional R & D capability  
Professional R&D software  
AutoCad, Solidworks, Pro-E, Protel

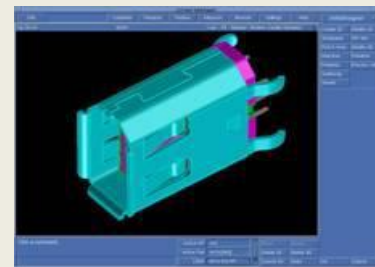
Advanced simulation software  
Moldflow , MSC.AFEA , ANSYS

International professional design  
Domestic Professional design  
Mold design and manufacture capabilities  
customize capabilities  
Automation design ability

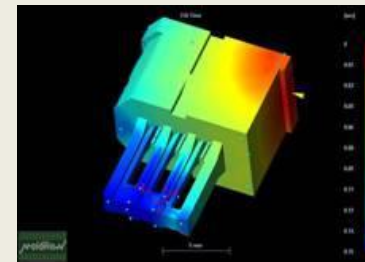
Professional manufacturing  
High precision processing equipment  
Production flexibility



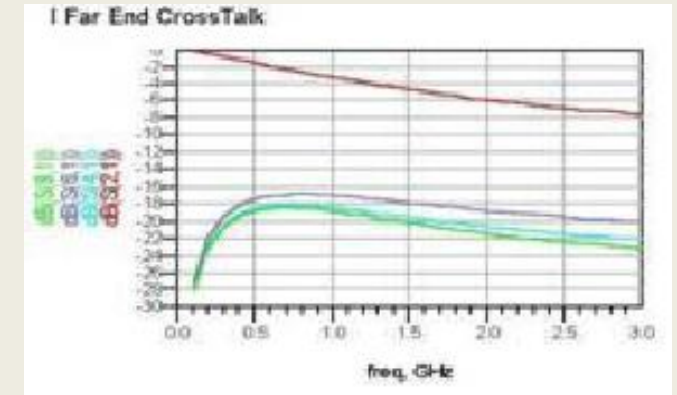
Autocad/ Solid works/ Pro.E



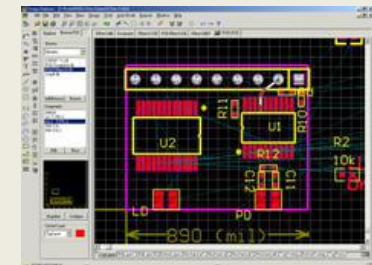
Mold-Flow  
Analysis



Protel Circuit layout



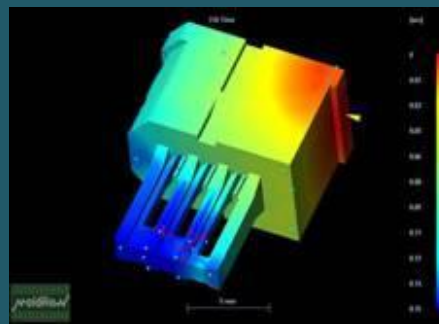
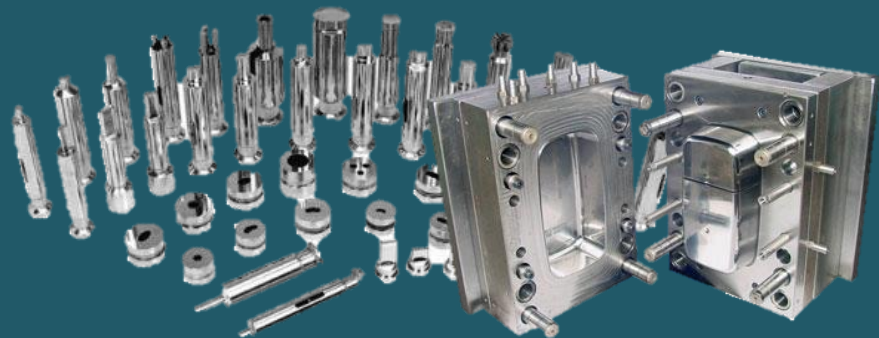
Hi-Freq. Electrical  
Analysis





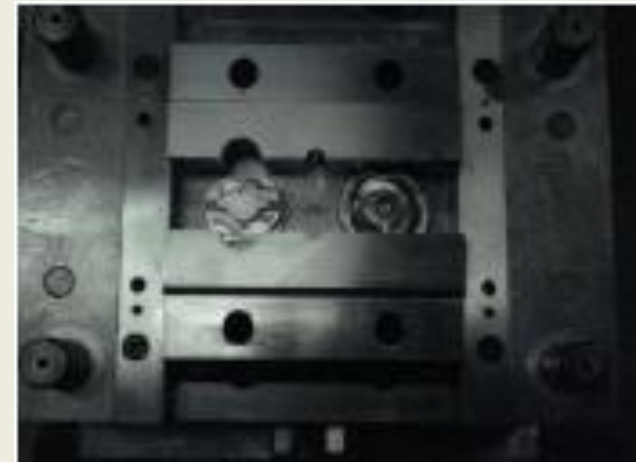
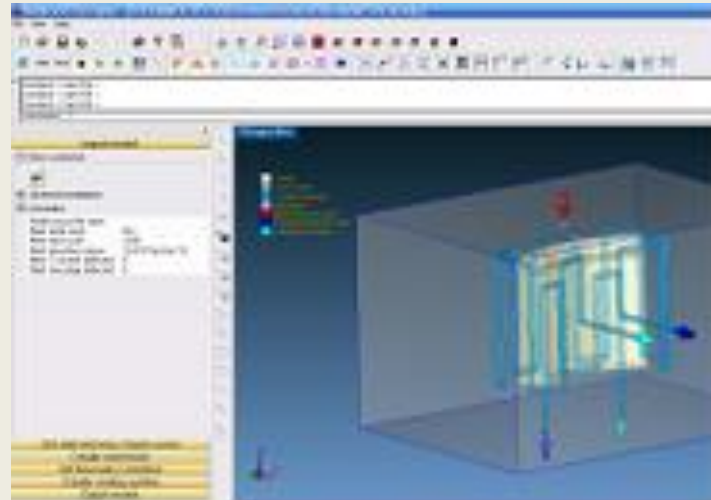
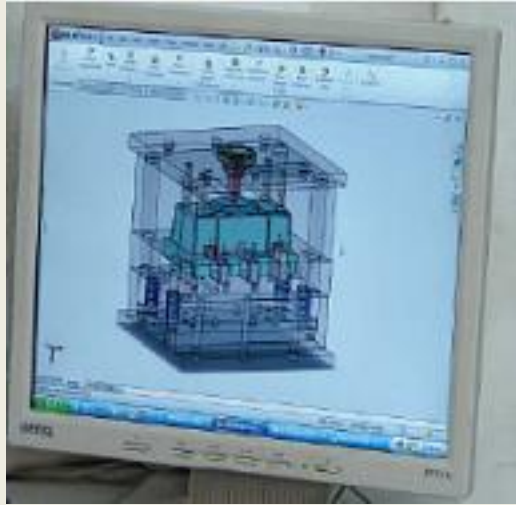


# Mold & Tooling





# Tooling



*Moldex 3D Software*

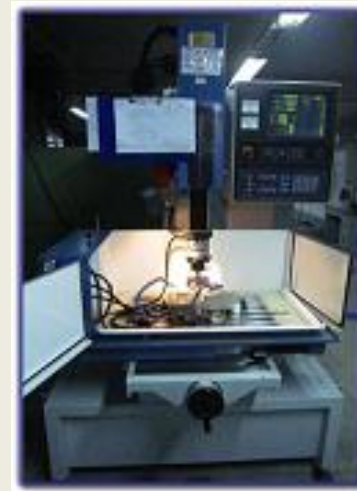


# Tooling

## Tooling Equipments



**CNC Machine**



**EDM Machine**



**Wire Cutting**



**Grinding machine**



**Milling Machine**



# Manufacturing Equipment

## Cable & Connector Assembly Equipments



Automatic cutting Machine



Automatic soak tin Machine



Automatic Packing Machine



Automatic Insert Machine